

SHEET
VICINITY MAP

225.93' FRONTAGE - 54' DRIVEWAY = 171.93'
 171.93' X 25' MULTIPLEX = 4,298.25 S.F. REQUIRED STREET YARD
 4,298.25 S.F. REQUIRED STREET YARD
 4,480 S.F. STREET YARD PROVIDED
 (595 + 201 + 3,684 S.F. = 4,480 S.F.)

FOUNDATION PLANNING

FRONT FACADE 17.5' X 36.5' = 639 S.F.
 639 S.F. X 12% = 77 S.F.

77 S.F. REQUIRED FRONT FOUNDATION PLANNING
602 S.F. PROVIDED FRONT FOUNDATION PLANNING

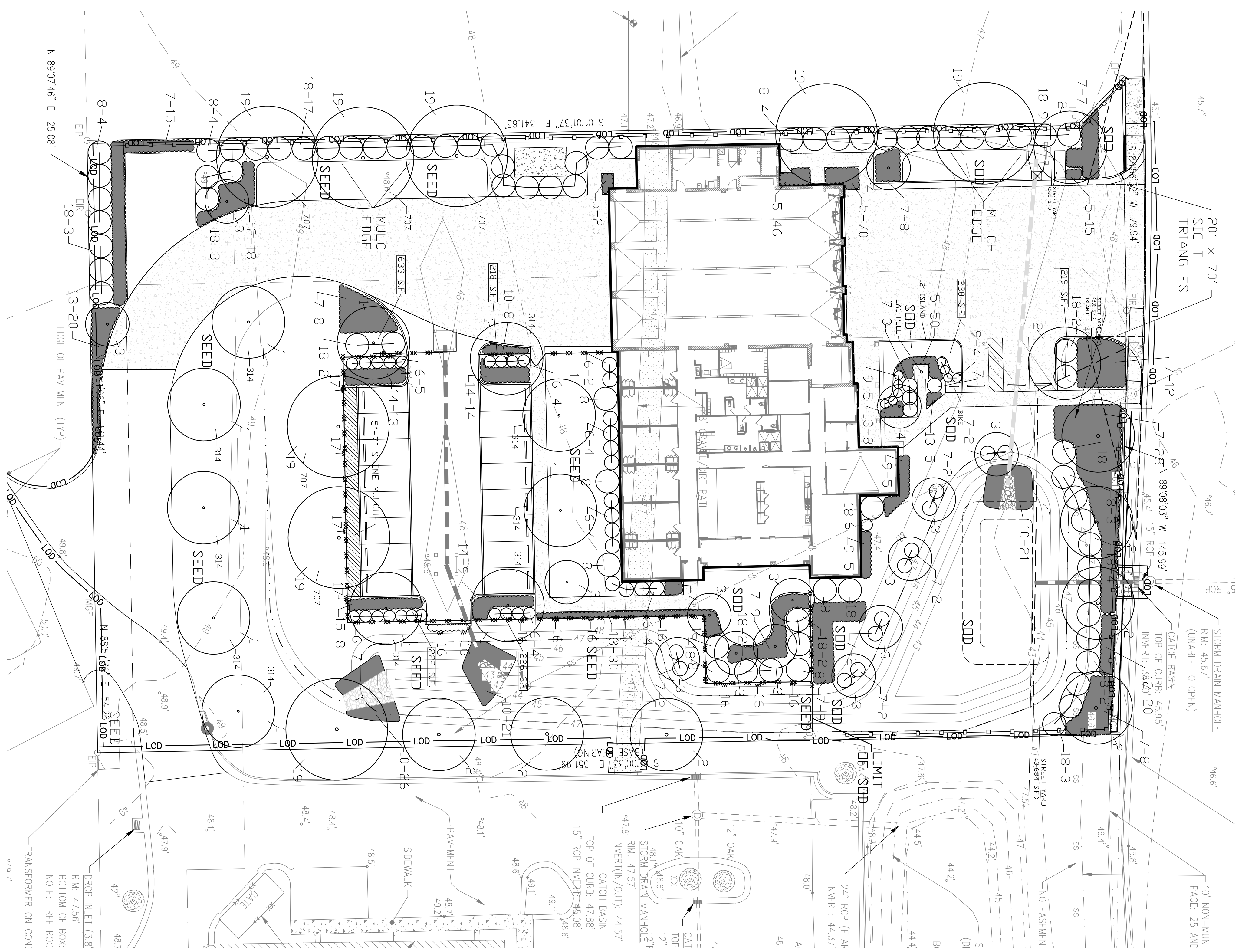
REAR FACADE 17.5' X 79' = 1,383 S.F.
 1,383 S.F. X 12% = 166 S.F.

166 S.F. REQUIRED REAR FOUNDATION PLANNING
2,149 S.F. PROVIDED REAR FOUNDATION PLANNING

PARKING AREA SHADE REQUIREMENTS 20%

TOTAL PARKING AREA 20,454 S.F. X 20% = 4,090 S.F.
TOTAL SHADE PROVIDED 4,090 S.F.
TOTAL SHADE REQUIRED 4,090 S.F.
TOTAL SHADE PROVIDED 7,303 S.F.

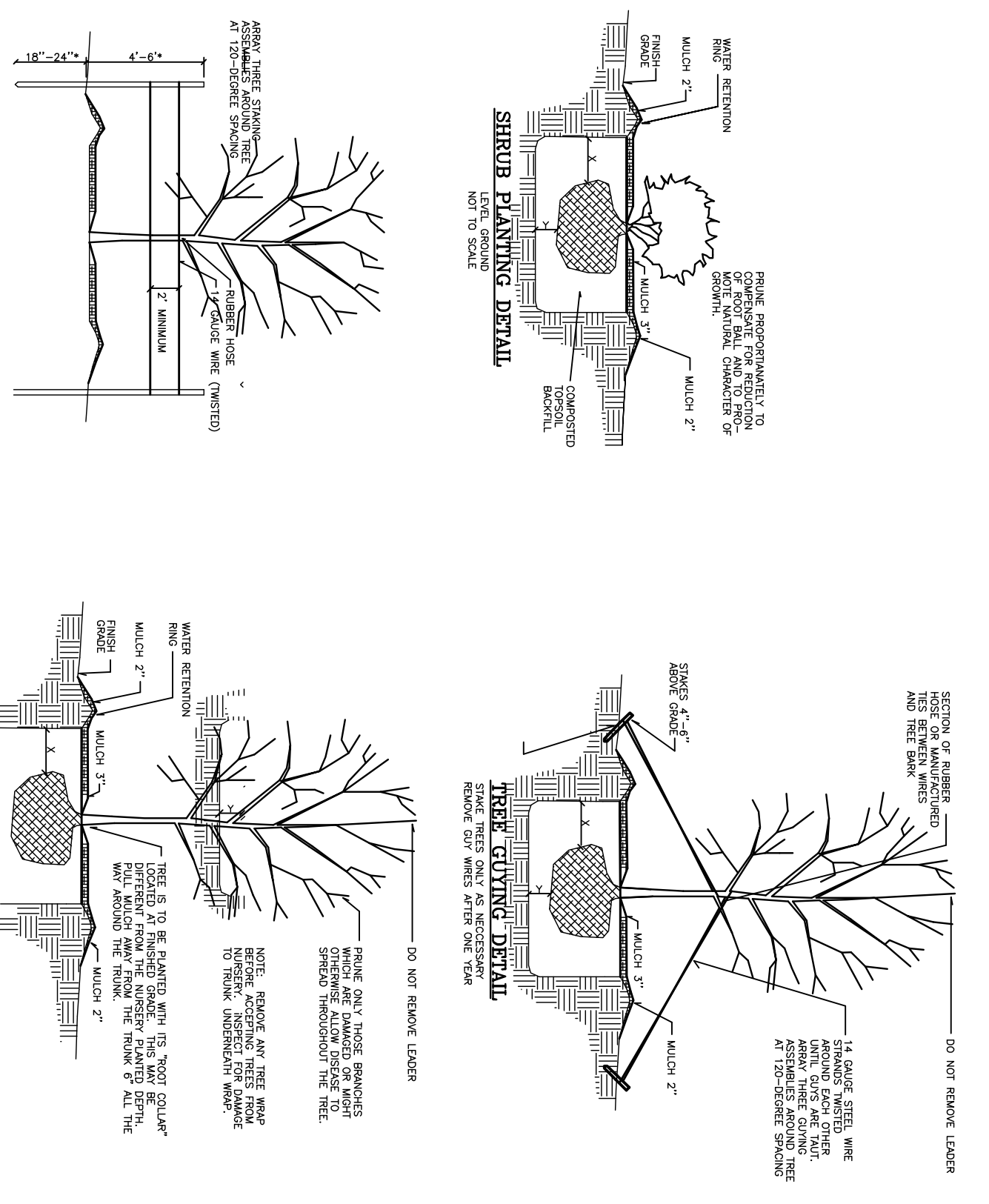
TREE REQUIRED 26
 172 TREES X 15 TREES PER ACRE = 25.8 OR 26 TREES
TREES PROVIDED 32



FIRE STATION #3 PLANT LIST

QTY	QUANTITY	BOTANICAL NAME	COMMON NAME	ROOT	DL	HT	REMARKS	NOTE
10	10	PSYDIA ONDENS	REDTIDE	ROOT	1'-3 1/2"	10'-12"		LARGE TREE
2	8	PRUNUS SEROTINA	YONKON CHERRY	MB	2 1/2"-3"	10'-12"		LARGE TREE
4	12	LACINIA STRATA	ORPE WHITE	MB	8'-10"	8'-10"		SMALL TREE
2	2	ALICE PLENUM	JAVANESE WAXE	25 DL	2 1/2"	8'-10"		SMALL TREE
5	186	ONYCHOS ALBIFLORUS	MONDO WAXE	1 DL	1'-0"	1'-0"		GROUND COVER
6	31	LEZ D'ORONIA NANA	DMAR PALM	3 DL	1'-0"	4'-0"		GROUND COVER
7	119	JAVANESE DIAPYDA PARSIVA	PANJANG JAVANESE	3 DL	3'-0"	5'-0"		GROUND COVER
8	19	ATTISODIA TORBA NANA	WELLBUSH TORBA	3 DL	3'-0"	5'-0"		GROUND COVER
9	78	HEMIDICULUS HYBRIDA	HEMIDICULUS HYBRIDA	1 DL	1'-0"	3'-0"		GROUND COVER
11	13	HEMIDICULUS HYBRIDA	DAILY	1 DL	1'-0"	3'-0"		GROUND COVER
12	18	MAELANDIA SPLENDIDA	PINK MAELANDIA	3 DL	2'-0"	2'-0"		SHRUB
13	50	CALAMAGOSTIS BOLDYNOVSKA	KOREAN FEATHER RED GRASS	1 DL	1'-0"	2'-0"		GROUND COVER
14	33	PERNETIA ALBERTOCCIENSIS 'COSMOS'	DMAR FOUNTAIN GRASS	3 DL	3'-0"	3'-0"		GROUND COVER
15	8	PERNETIA ALBERTOCCIENSIS 'TORNADO'	DMAR FOUNTAIN GRASS	3 DL	3'-0"	3'-0"		GROUND COVER
16	11	PERNETIA ALBERTOCCIENSIS 'TORNADO'	PERNETIA ALBERTOCCIENSIS 'TORNADO'	5 DL	5'-0"	5'-0"		GROUND COVER
17	4	ROSA SANCTAE	BLISS ROSE	5 DL	5'-0"	5'-0"		GROUND COVER
18	50	AZALEA NICKA	NOVA AZALEA	5 DL	5'-0"	5'-0"		GROUND COVER
19	8	ODONDIS FIELDS	MELLOW OAK	MB	3'-3 1/2"	7'-0"		SHRUB

NOTE: All plant quantities shown on the plant list are provided as a convenience and are not a guarantee of quantity. The contractor shall be responsible for providing the correct quantity of plants. The contractor shall be responsible for providing the correct quantity of plants. The contractor shall be responsible for providing the correct quantity of plants.



SCHEDULE FOR PLANTING

SHEET NO.	DATE	REVISION
1	1-12-16	1
2	6-1-16	2
3	1-28-16	3
4	3-2-16	4
5	3-2-16	5



Approved Construction Plan

Wilmington
 Public Services Engineering Division
 APPROVED STORMWATER MANAGEMENT PLAN
 Date: _____ Permit #: _____
 Signed: _____

BECKER MORGAN
 ARCHITECTURE
 PLANNING
 3205 Rencel Parkway, Suite 211
 Wilmington, NC 28403
 910.341.7800
 312 West Main St, Suite 300
 Salisbury, MD 21801
 410.546.9700
 Dover, DE
 309.5.5000
 302.724.7890
 www.beckermorgan.com

CATTIN
 Engineers and Scientists
 220 Old Dairy Road
 Wilmington, NC 28403
 Corporate License No. for Engineering Services C-888

HITCO
 Howard T. Capps & Associates, Inc.
 401 S. Salisbury Blvd., Suite 100
 Salisbury, NC 28380
 815.333.3333
 www.hitco.com

WILMINGTON FIRE DEPARTMENT
FIRE STATION No. 5
 680 SHIPYARD BLVD.
 WILMINGTON, NC 28403

PROJECT TITLE
 LANDSCAPE PLAN

DATE
 AUGUST 1, 2016

SCALE
 1"=20'

DRAWN BY: LML/KAG **PROJ MGR:** LML

SHEET L-1